

UNITED STATES OFFICE OF  
**GOVERNMENT ETHICS**



Preventing Conflicts of Interest  
in the Executive Branch



# OVERVIEW

Each year, executive branch agencies submit to OGE responses to an Annual Questionnaire (Questionnaire).

The Questionnaire asks for information about ethics officials and the administration of agency ethics programs as well as core elements of the ethics program that assist in the identification and resolution of potential conflicts of interest.

The compiled data provides valuable insights about the executive branch ethics program.

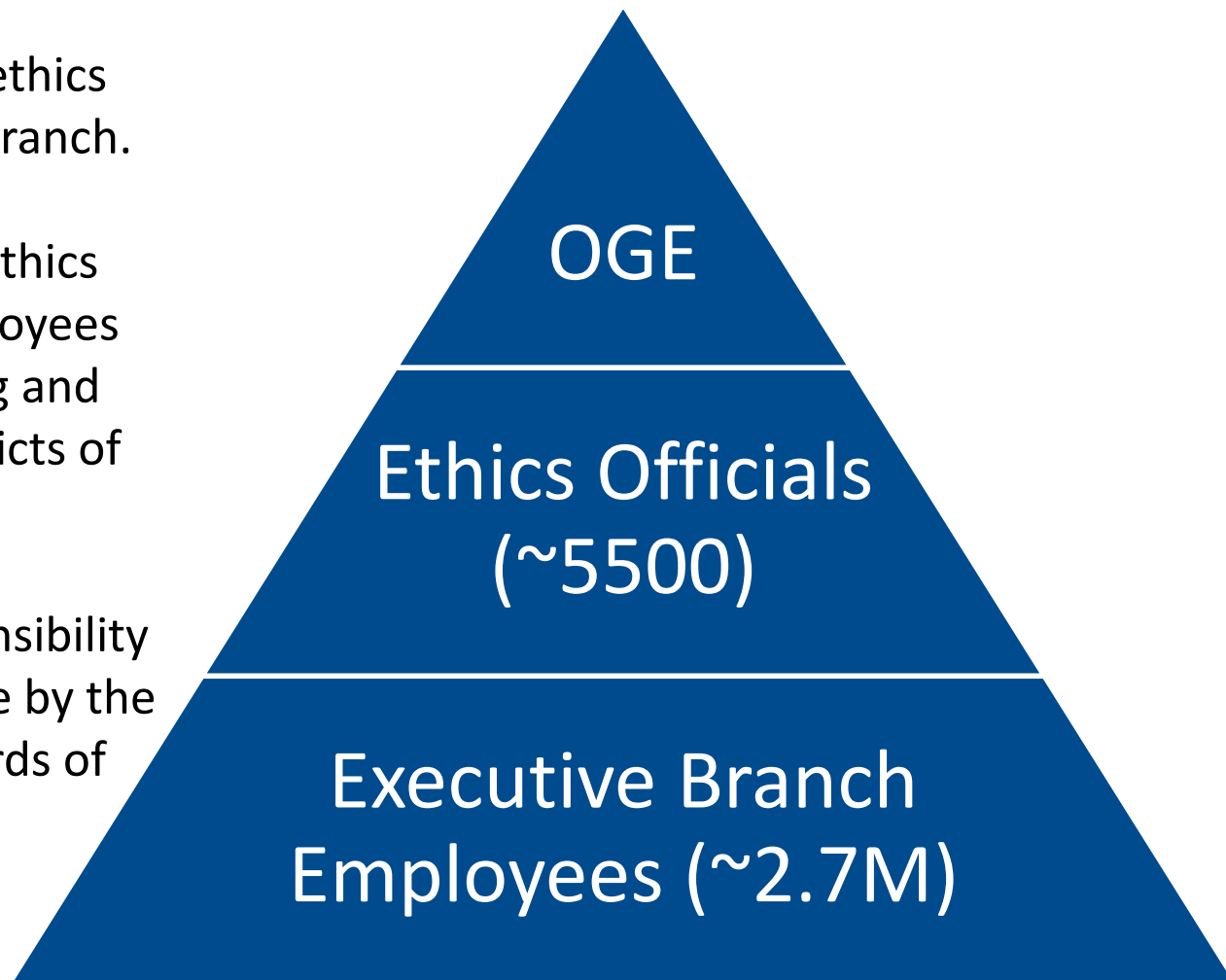
**136 executive  
branch agencies  
submitted  
Questionnaires**

# ROLES & RESPONSIBILITIES

OGE is the supervising ethics office for the executive branch.

Each agency appoints ethics officials to provide employees assistance in identifying and resolving potential conflicts of interests.

Ultimately, it is the responsibility of each employee to abide by the ethics rules and standards of conduct.



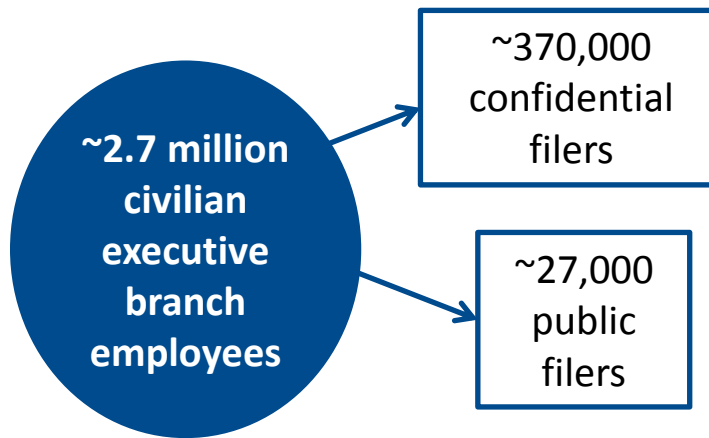
# TOOLS TO IDENTIFY AND RESOLVE POTENTIAL CONFLICTS OF INTEREST

## EDUCATION & TRAINING

More than 428,000 employees received annual ethics training.

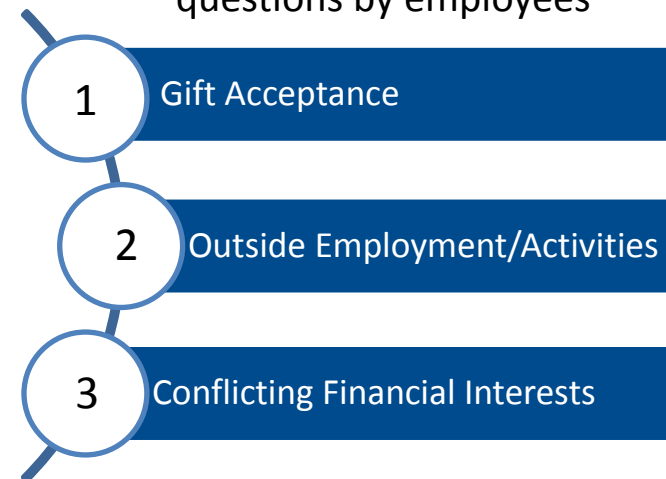
The majority of agencies include Initial Ethics Orientation as part of their agency's in-processing process.

## FINANCIAL DISCLOSURE



## ADVICE & COUNSELING

Most frequently asked questions by employees



**Recusal is the most often used method to remedy a conflict of interest.**

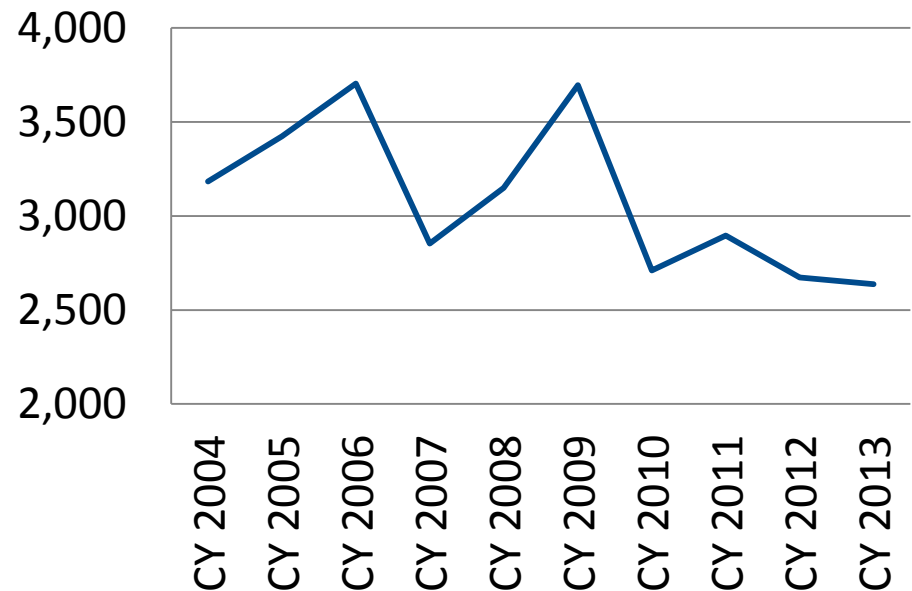
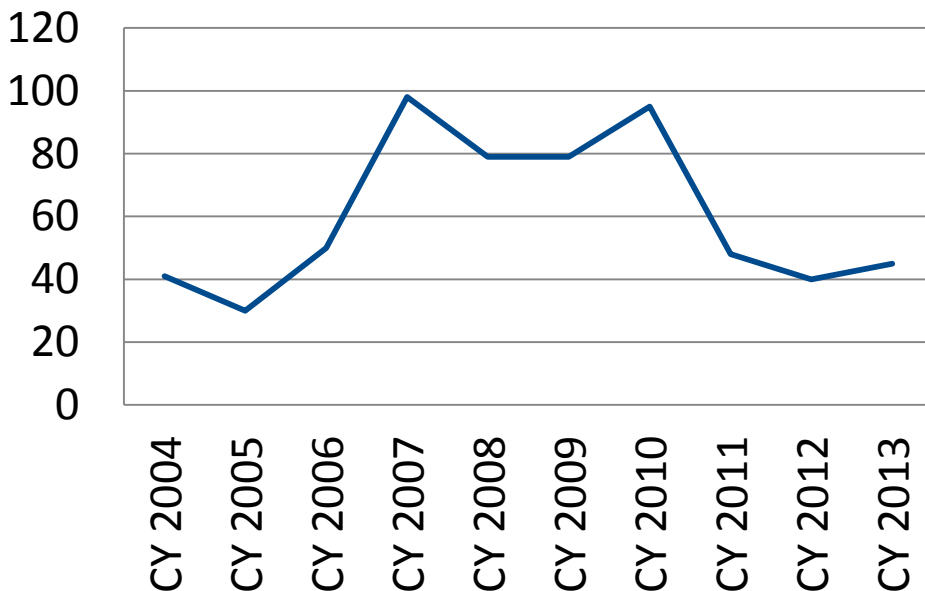
# ENFORCEMENT

OGE's mission is one of prevention. OGE does not adjudicate complaints, investigate matters within the jurisdiction of Inspectors General and other authorities, or prosecute ethics violations.

For more information about enforcement, click [here](#).

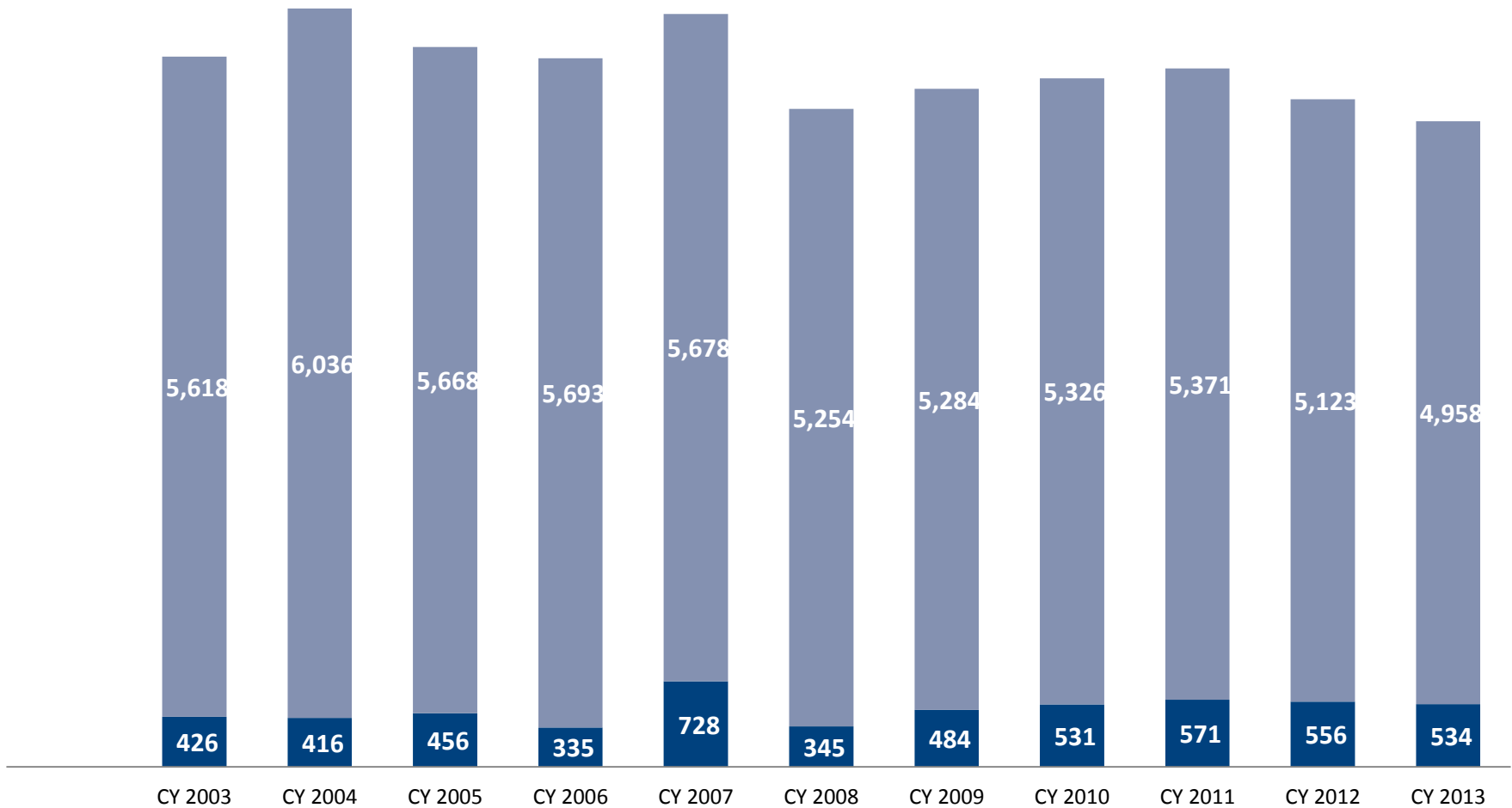
# of disciplinary actions\* taken based wholly or in part upon violations of the criminal conflict of interest statutes, 18 USC 203, 205, 207, 208 and 209 in 2013.

# of disciplinary actions\* taken based wholly or in part upon violations of the standards of conduct provisions (Part 2635) in 2013.



\*Disciplinary Action = include removals, demotions, suspensions, and written reprimands or their equivalents.

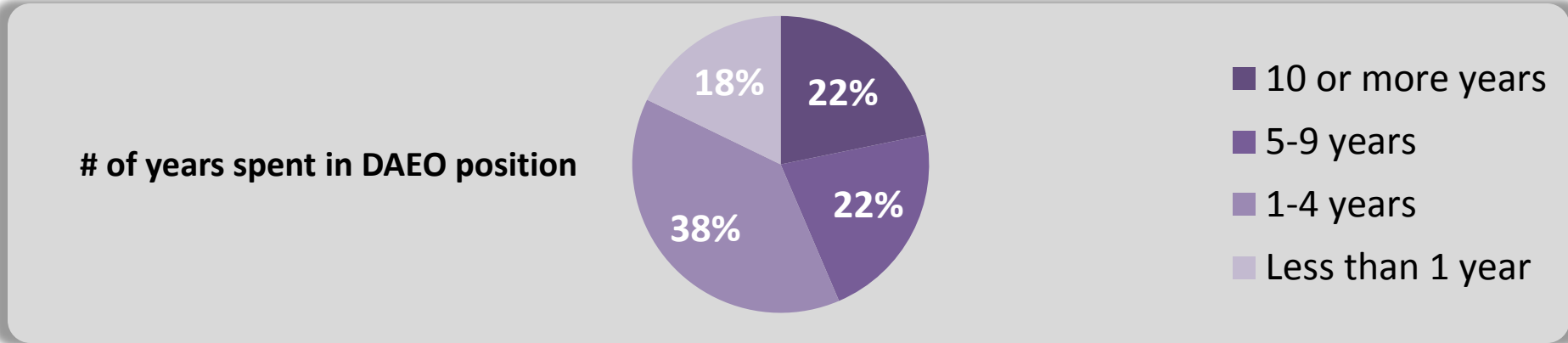
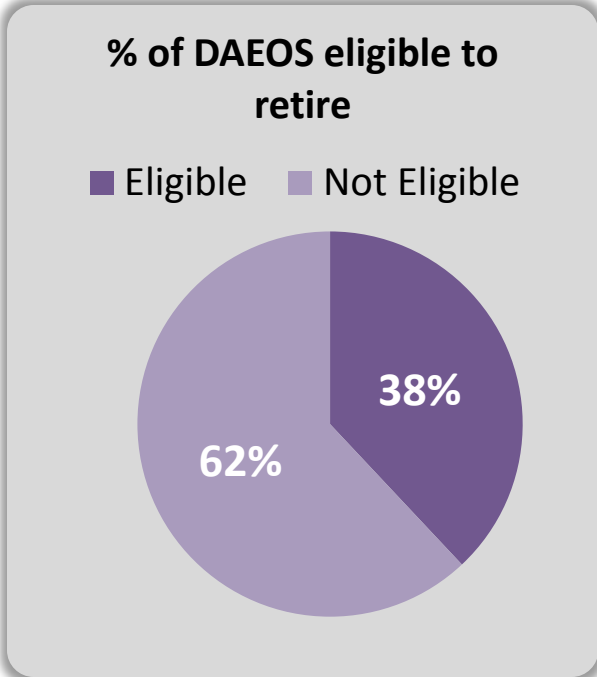
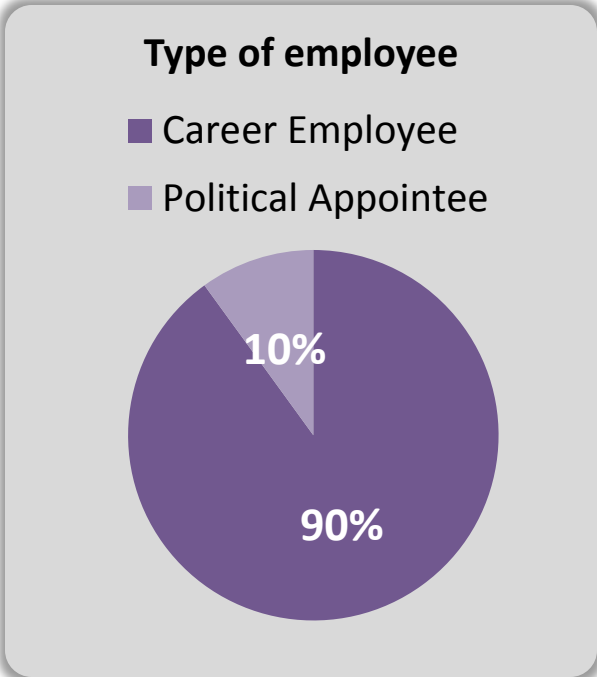
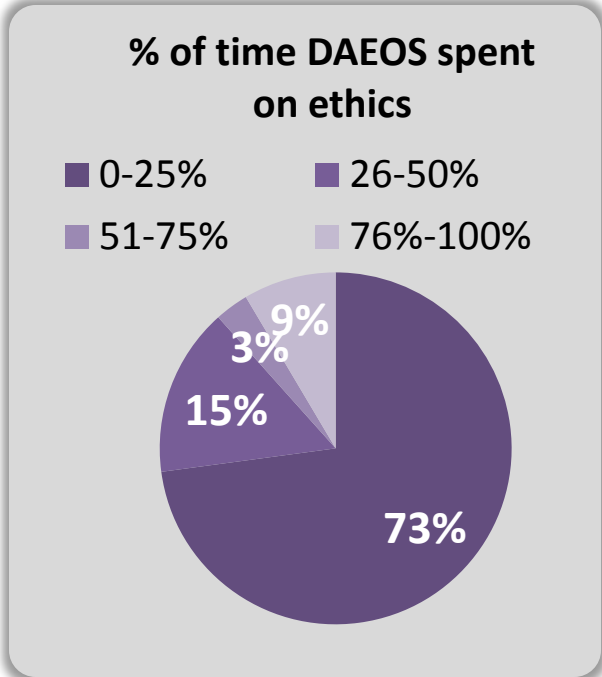
# How many ethics officials are there?



■ Number of ethics officials who worked part-time on ethics

■ Number of ethics officials who worked full-time on ethics

# Designated Agency Ethics Official = the most senior ethics official at an agency



[www.oge.gov](http://www.oge.gov)

[@OfficeGovEthics](#)

[YouTube](#)

[Google+](#)